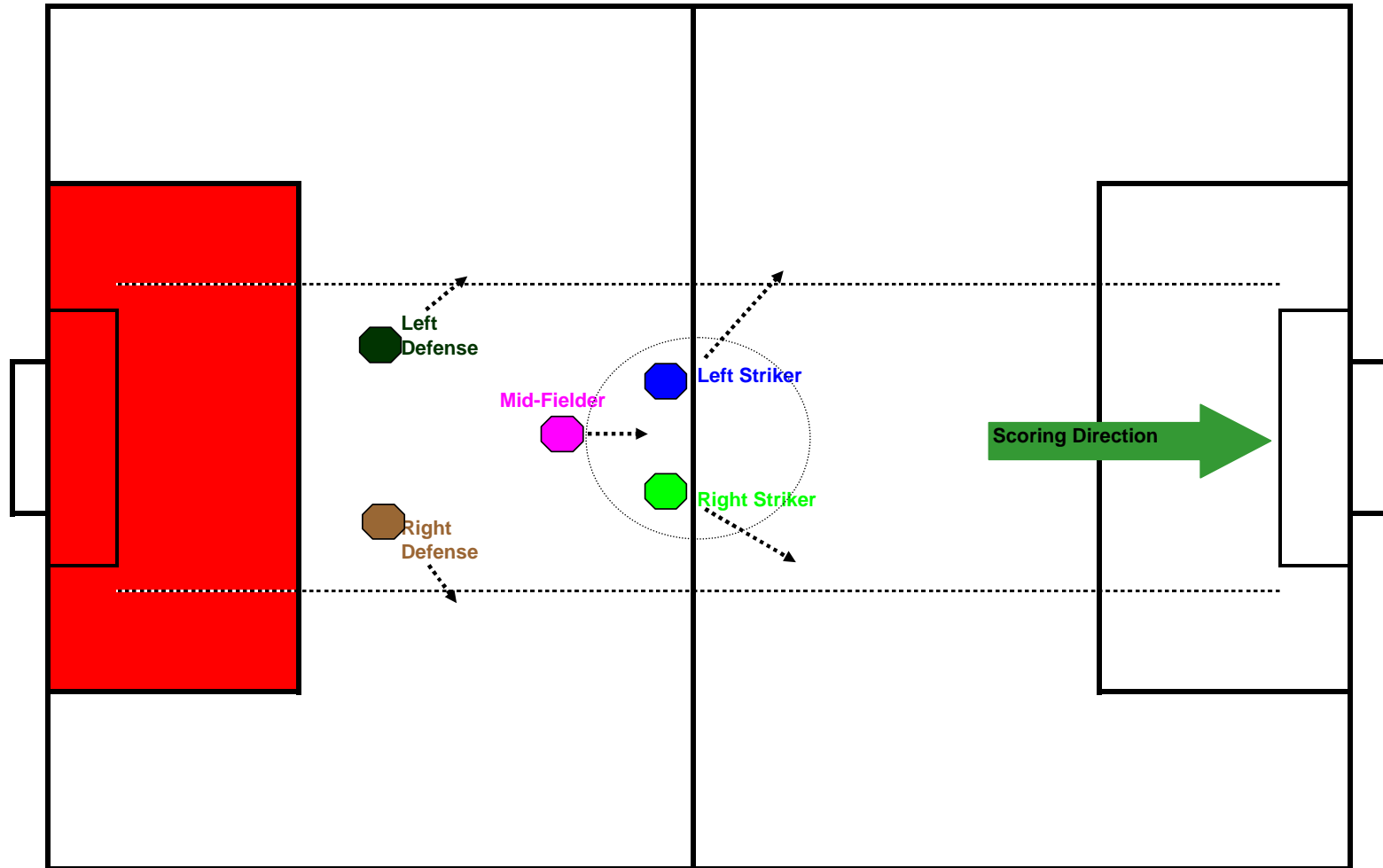
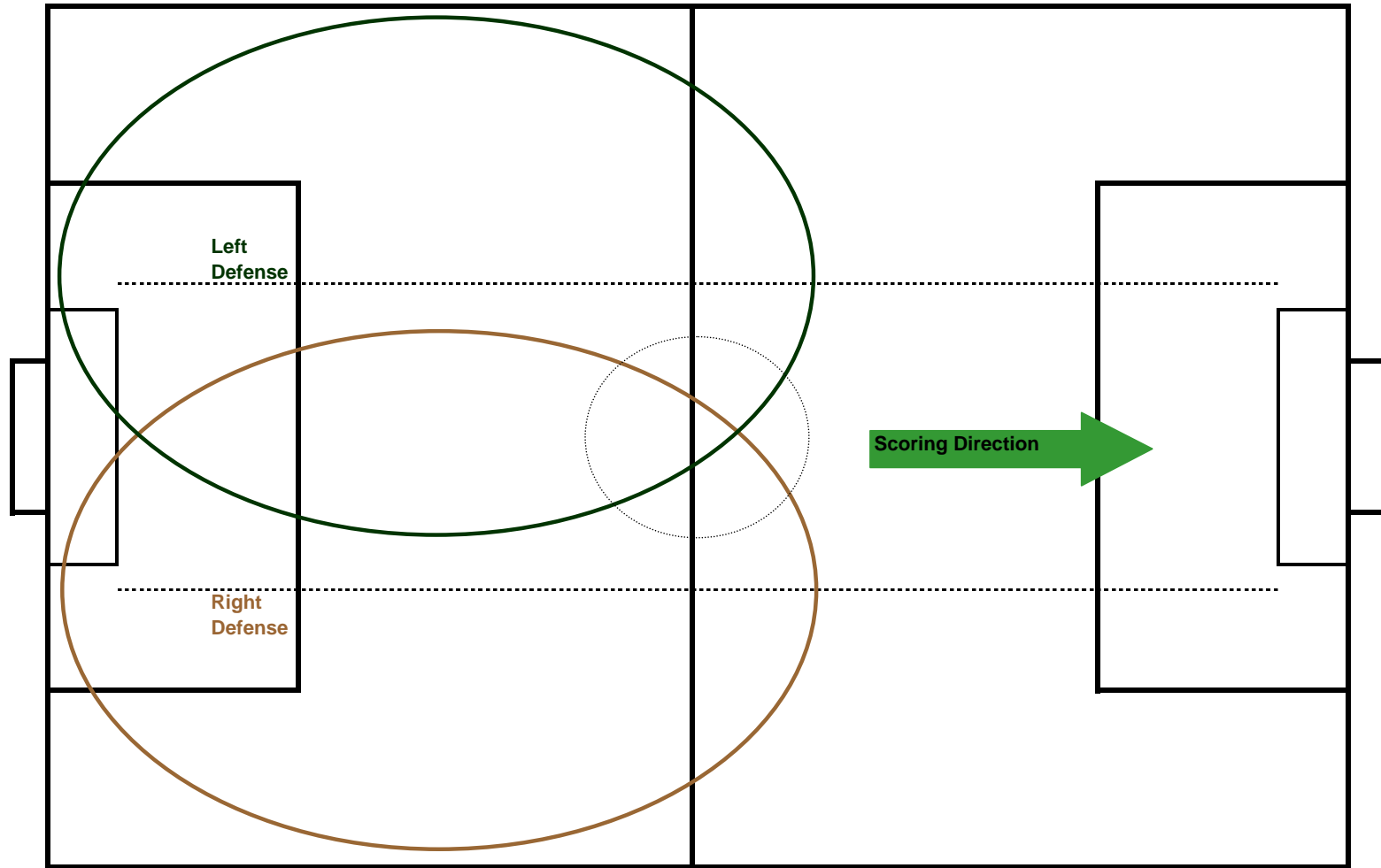


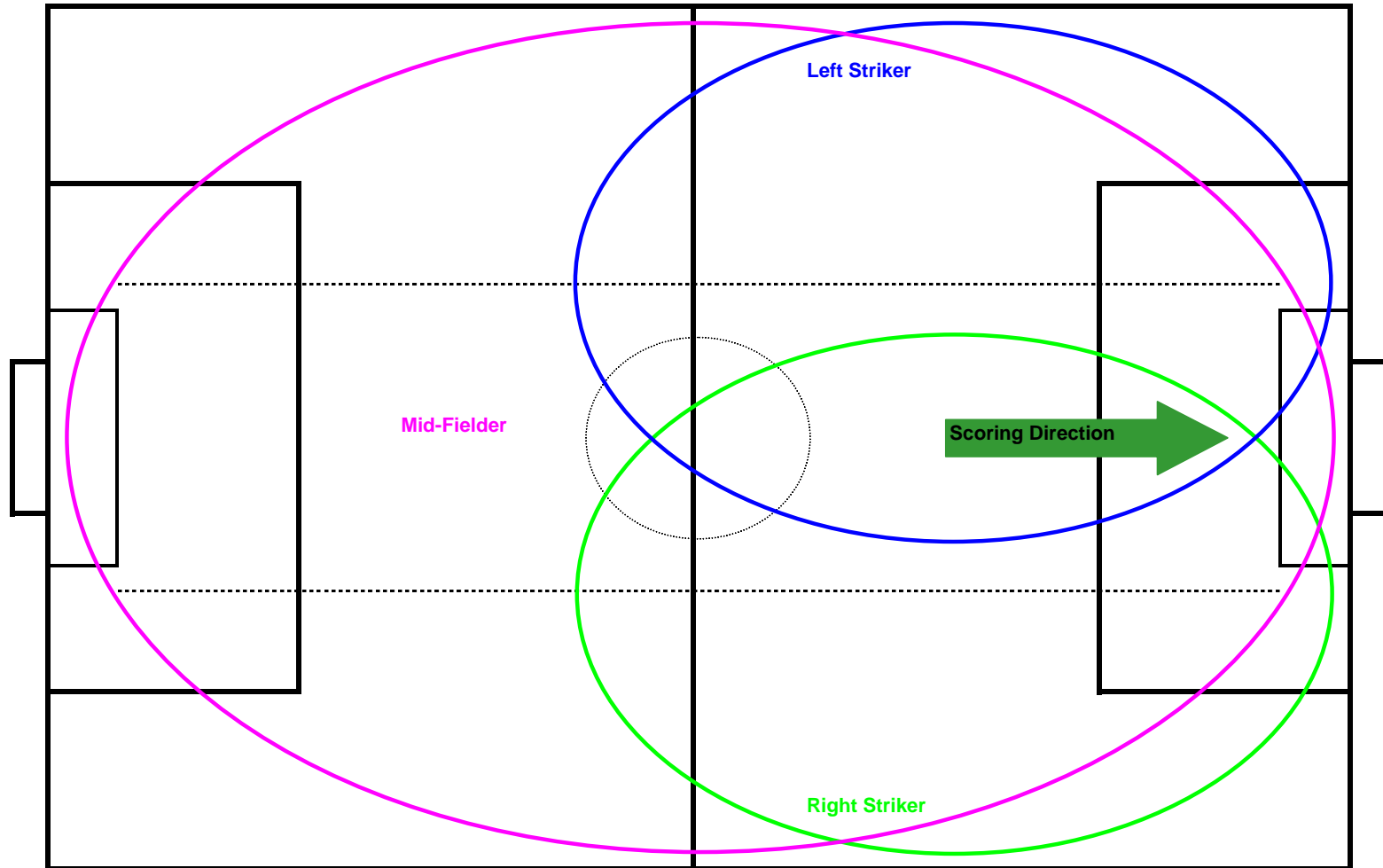
Positioning and **areas of responsibility** GUIDELINE for the all players.
This also the starting locations for the start of the game.



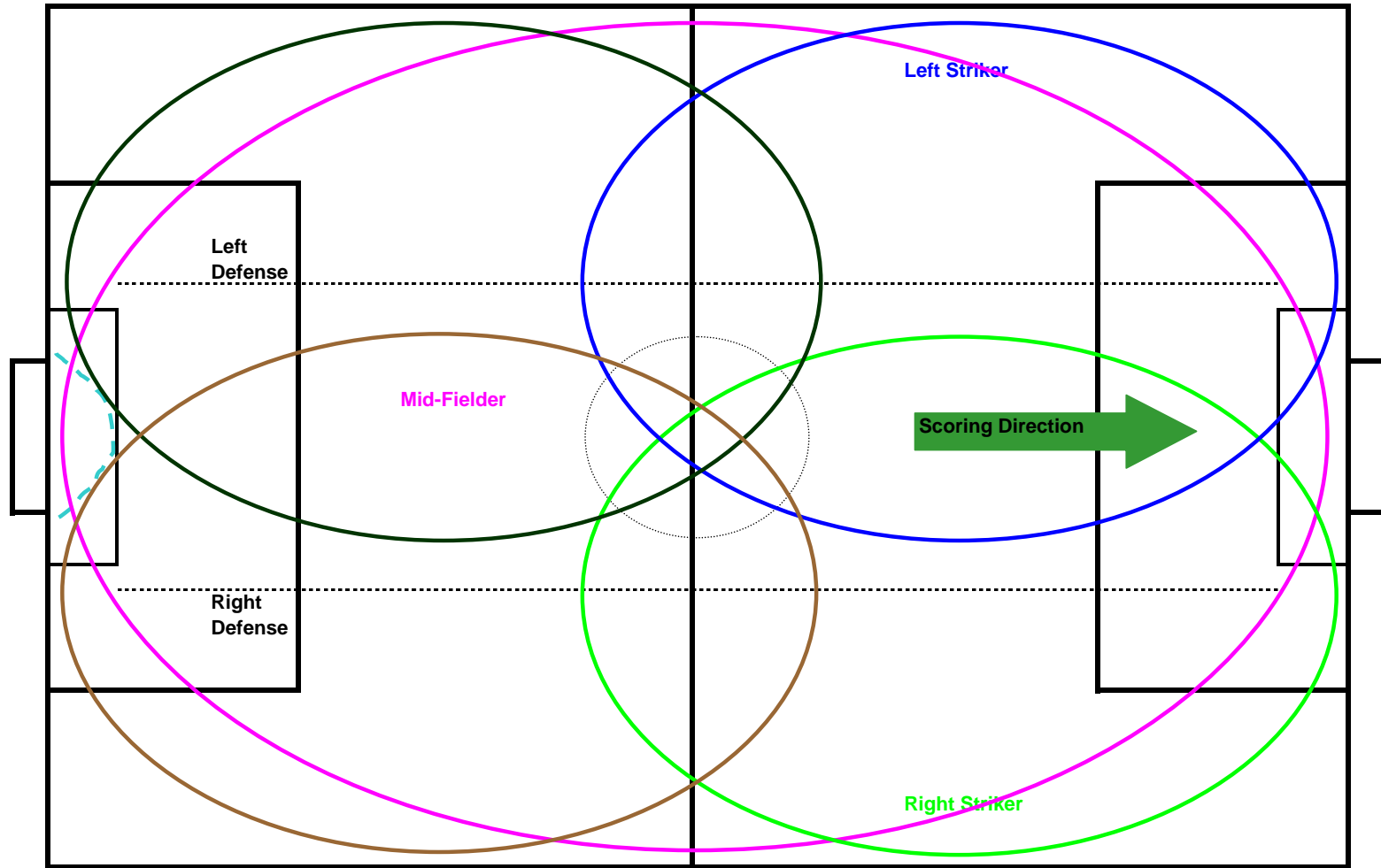
Positioning and areas of responsibility GUIDELINES for Left & Right Defense



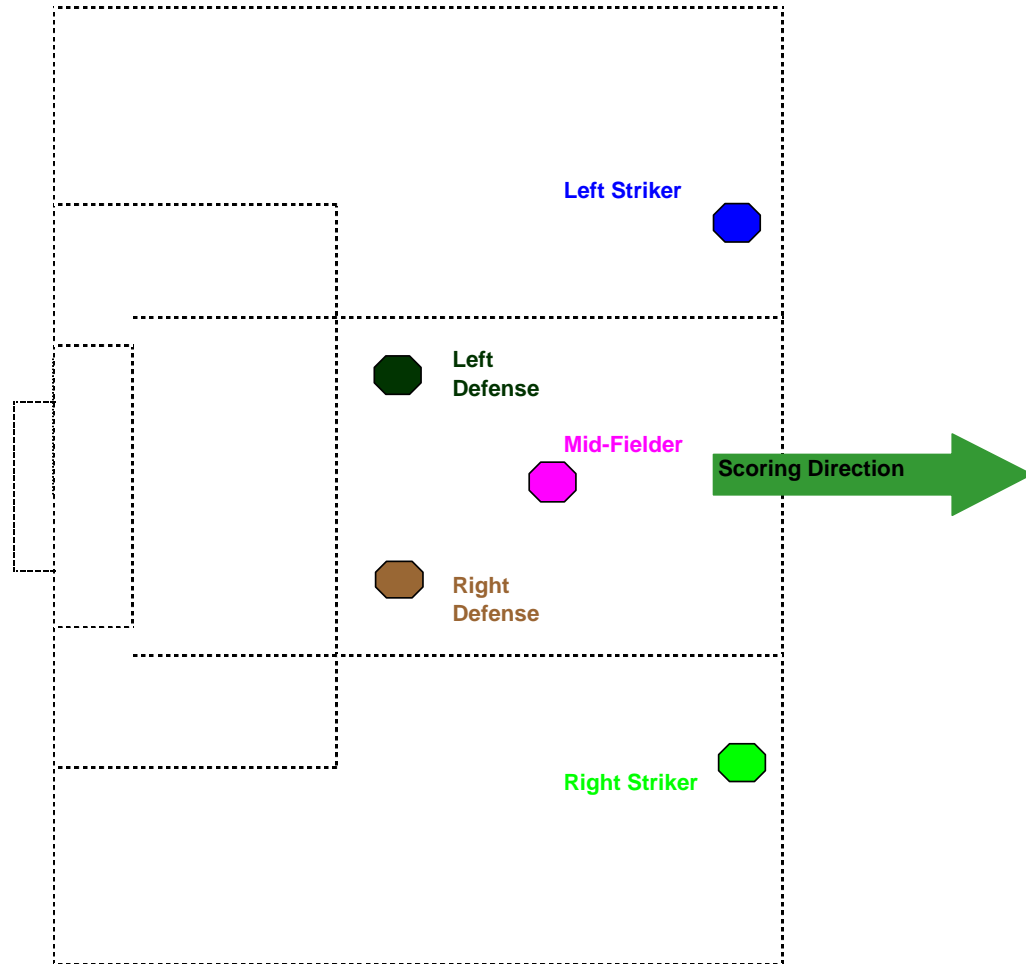
Positioning and areas of responsibility **GUDELINES** for **Left & Right Strikers** and **Mid-Fielder**



Positioning and areas of responsibility GUIDELINES for all 5 players



Player movement during the game. (Print on clear overhead sheet.)



Player movement backing. Print and put behind previous page (overhead sheet)

